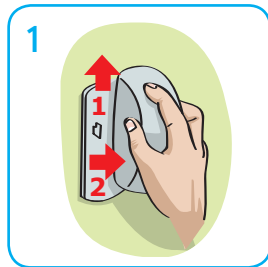


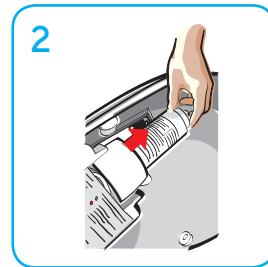
How to

Replace a Good Sense dispenser

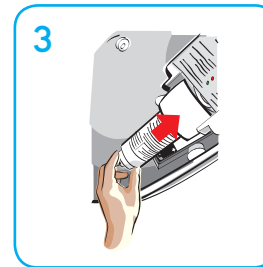
Refilling Good Sense dispenser When: The LED light flashes red



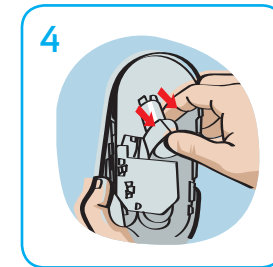
1 Unlock (rotate arrow to unlocked position). Lift cover up and off the wall unit.



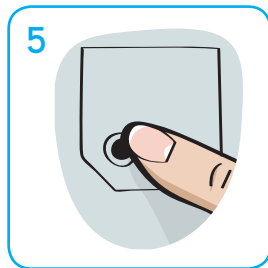
2 Lift (gently) the old cartridge upward and slide its base out first.



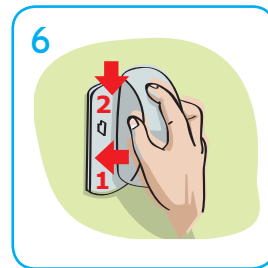
3 Insert tip of refill cartridge into nozzle inside the dispenser cover.



4 Slide base of refill cover into place slightly sideways, and twist refill to align it into slot.



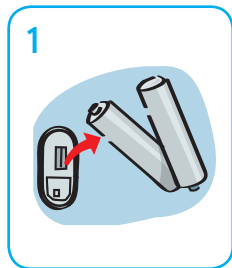
5 Press the 'reset' button inside the dispenser.



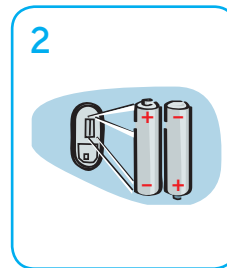
6 Replace the cover and lock the dispenser by rotating the arrow to the 'locked' position. WHEN CARTRIDGE IS INSTALLED, KEEP NOZZLE AWAY FROM EYES.

Changing batteries

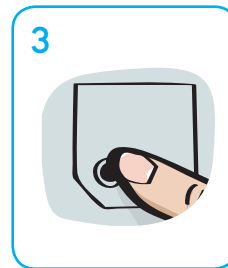
When: The LED light stops flashing



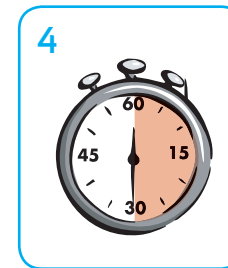
1 Remove the old batteries.



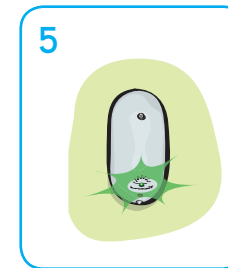
2 Insert two alkaline 'AA' batteries in the battery compartment under the unit cover. Ensure positive and negative connections are aligned appropriately.



3 Press the 'reset' button.



4 Wait for the motor to turn once (approx 30 seconds).



5 The LED on the cover should flash green.