



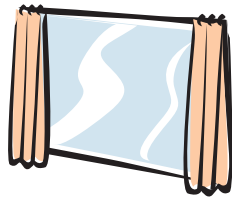
Mini Guide - Room Care R3-plus

Available in 1.5 litres Divermite

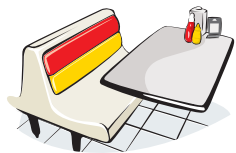
Use for cleaning:



Glass



Windows



Laminate surfaces

Keeping safe:

- Diluted solution: non-classified
- Concentrate: harmful
- Wear gloves for prolonged hand contact



Concentrated divermite refill pouch



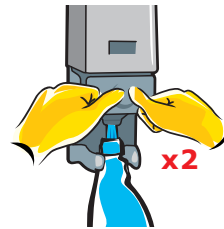
Concentrated glass and multi-surface cleaner



For use with Diversey Divermite system

Using...

1



General cleaning
2 x doses into R3 Divermite spray bottle.

2



Attach trigger spray. Ensure nozzle is closed. Shake gently to mix.

3



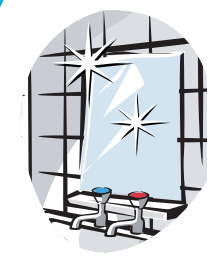
Turn nozzle to spray position. Spray onto a soft cloth.

4



Wipe surface clean.

5



Buff to a shine.

MG_142 - 07/11

QUESTIONS?

Freephone UK: 0800 525 525

Freephone IRE: 01 8081808

Please note: All telephone calls to this number are recorded for training and quality purposes.

