



Soft Care

Soft Care Plus Foam H42 Mini Guide

Available in 700 ml cartridge

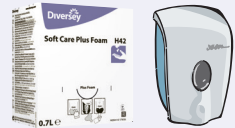


Use for cleaning:



Hands

Benefits...



Soft Care 700 ml pouch to be used with the Soft Care Foam dispenser

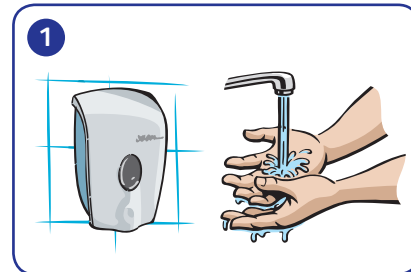


Hand washing foam with antimicrobial agents

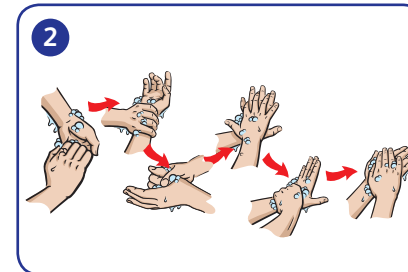


Non-tainting

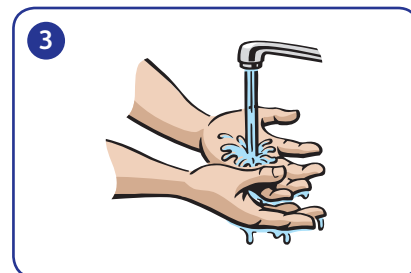
Application...



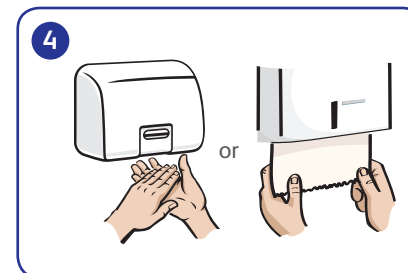
Wet hands with lukewarm water and apply one or two doses of product from dispenser.



Rub to form a rich lather and wash for at least 60 seconds.



Rinse well with water.



Dry hands thoroughly. Dry hands are crucial for maintaining good hand hygiene and for keeping skin in a good, healthy condition.

