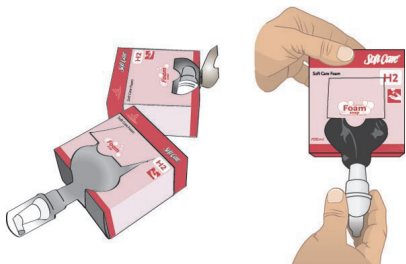


How to

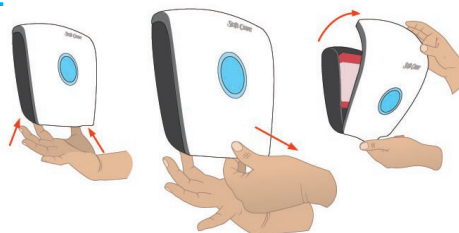
Replace a Soft Care™ Foam cartridge

1



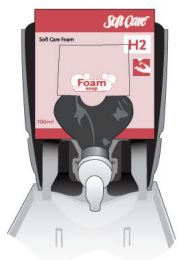
Open packaging along tab and pull out dispensing nozzle. Remove and dispose of dispensing nozzle cap.

2



To open the dispenser push the left and right pads underneath, pull out at the bottom and pull the cover down from the top.

3



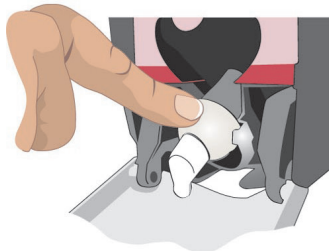
Please remove empty product box.

4



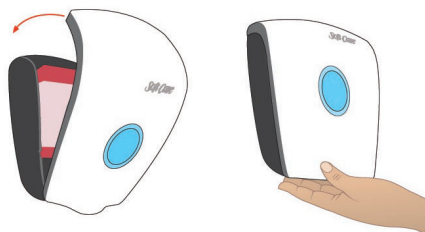
Fit cartridge into Soft Care dispenser unit ensuring the nozzle 'clicks' into place.

5



Make sure the nozzle is correctly positioned.

5



Close the front cover. The unit is now ready to use.